

WHEELED EXCAVATOR  
**HW210A**

Operating weight: 21200 kg  
Engine power: 145 kW (195 HP) / 2200 rpm  
Bucket capacity: 0.80 m<sup>3</sup> - 1.34 m<sup>3</sup>





# A IM HIGH

A line of five Hyundai HW210A wheeled excavators is parked on a paved road that stretches into the distance. The excavators are black with yellow accents on the cabs and hydraulic arms. They are arranged in a line, with the largest one in the center foreground. In the background, a large, white, stylized letter 'A' is superimposed over the scene. The sky is a mix of orange, yellow, and blue, suggesting a sunset or sunrise. Power lines and poles are visible in the background, receding into the distance.

## Take your performance to the next level!

Hyundai Construction Equipment has raised the benchmark again with a new series of wheeled excavators that give you the edge in numerous on-road and off-road applications. Our A-Series machines comply with EU Stage V emissions regulations while delivering higher performance, better fuel efficiency, superior travel speed on the road, an improved cabin and added safety features.

Featuring a new, compact rear design and enhanced controllability, the HW210A is a real heavy-duty all-rounder! Ideally suited to road, pipeline and canal construction and earth-moving work, it also capably handles trenching, digging, dozing, drilling, cutting, lifting and site preparation. Set your sights on higher efficiency and outstanding results.

**Together, we can move mountains!**



Productivity & Efficiency

# AIM FOR SUPERIOR PERFORMANCE

... with effortless power.

From its upgraded, eco-friendly engine to its carefully chosen control technologies, the HW210A wheeled excavator helps operators to achieve new heights of productivity. Hyundai's EPFC hydraulic system in connection with variable power control allows the machine to deliver the exact performance when and where needed. The HW210A is the right machine for heavy-duty applications where manoeuvrability matters.



NEW

**High-performance Stage V engine**  
The HW210A is equipped with a fuel-efficient Cummins B6.7 Stage V engine that meets the world's strictest emission regulations. Its compact 6-cylinder configuration delivers impressive power and performance with 31% more peak torque and 5% more peak power than its predecessor.

↑  
**14% FUEL SAVINGS**  
vs HW210 predecessor  
**+31% PEAK TORQUE**  
**+5% PEAK POWER**  
vs predecessor



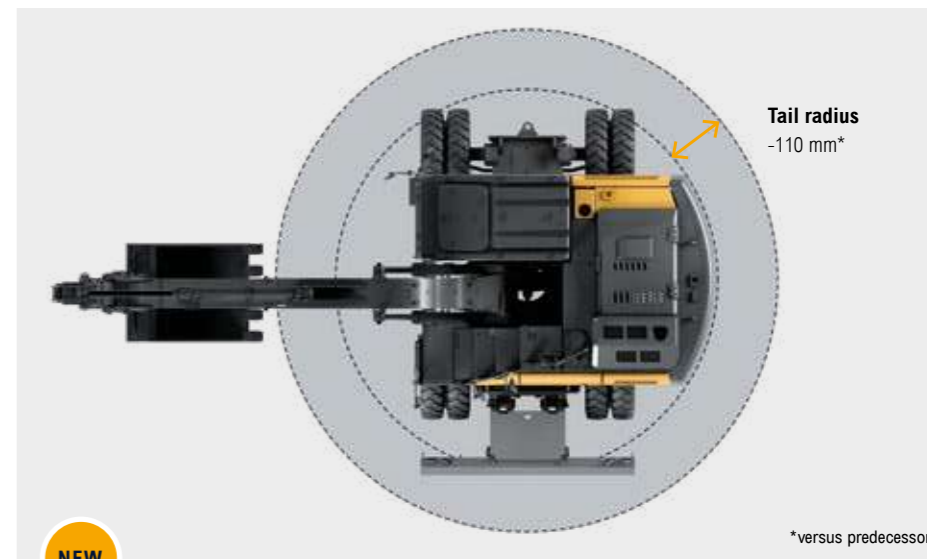
NEW

**Eco gauge**  
This feature helps operators to reduce emissions and running costs by constantly monitoring efficiency. It displays engine workload and fuel-saving status while the machine is working.

**Engine auto-idle**  
The auto-idle feature saves fuel, reduces noise and cuts exhaust emissions by automatically switching the engine to idle setting when the excavator is inactive. This reduces fuel consumption without affecting productivity.

**Advanced exhaust aftertreatment**  
Our all-in-one exhaust aftertreatment module combines a DOC, SCR and DPF in one unit. EGR-free and featuring DPF auto-regeneration, this simplified system is more robust and requires less maintenance. Removing the need for EGR has also enabled us to improve productivity through better fuel economy and longer service intervals.

**Hydrostatic 4-wheel drive**  
The 4-wheel hydrostatic drive system ensures a smooth driving experience, even in rough conditions.



Tail radius  
-110 mm\*

\*versus predecessor

**Reduced tail radius**  
The HW210A tail radius has been reduced by 110 mm (from 2850 mm to 2740 mm). This helps operators to work safely, confidently and efficiently in confined spaces and busy construction environments.



NEW

**EPFC (Electronic Pump Flow Control)**  
EPFC improves fine control while also reducing fuel consumption. The advanced hydraulic system and controls allow operators to tailor performance for the job at hand, ensuring the optimal balance of power and precision.

**Proportional auxiliary hydraulics**  
Productivity is further enhanced by a proportional auxiliary hydraulics system. A proportional single or double-acting circuit is installed as standard, enabling smooth, precise control of attachments.





**Productivity & Efficiency**

# AIM FOR MAXIMUM RETURN ON INVESTMENT

with the flexibility to tackle any job.



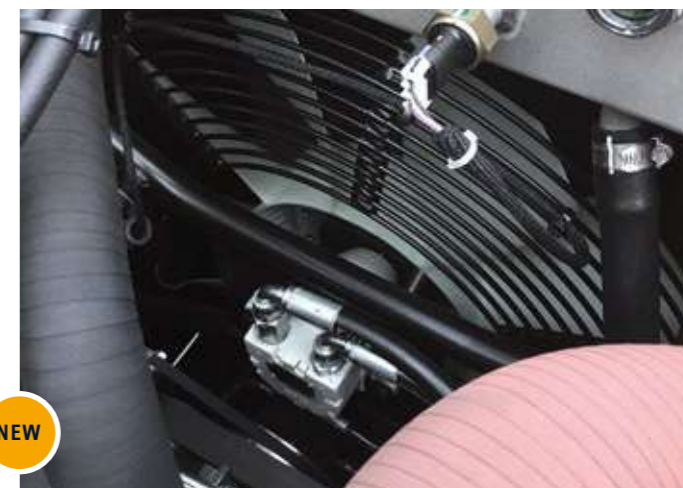
**Undercarriage support options**

The HW210A can be equipped with various combinations of front and rear outriggers or a dozer blade, allowing for tailored support to enhance stability as required by the work environment.



**Electronically controlled reversible fan**

The reversible fan is electronically controlled to provide automatic engine cooling. An improved self-cleaning fan mode efficiently eliminates dust and debris, protecting performance and productivity.



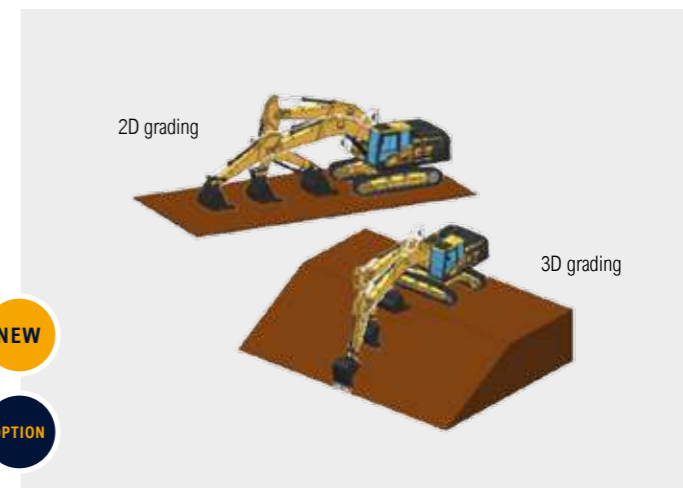
**Tiltrotator**

A factory-mounted Engcon tiltrotator is available as an option, boosting efficiency and profitability through enhanced control with lower fuel consumption.



**2D and 3D grading**

Your HW210A wheeled excavator can be supplied with factory-prepared 2D or 3D-ready Machine Control or Machine Grading systems. This gives you the flexibility to work on a wider range of job sites and applications.





**Durability**

# AIM FOR MORE UPTIME AND DRIVING PLEASURE

**... with robust construction and reliable components.**

Hyundai has always been driven by the goal of providing durable machines that will create the ultimate long-term ownership experience for our customers. As well as improving engine reliability and simplifying the exhaust aftertreatment system, we have reinforced and optimised numerous other components to extend the lifetime of our A-Series wheeled excavators. Our ultimate aim is to minimise downtime and repairs so that you can stay on schedule, avoid unexpected costs and protect your profits.



**Hi-grade (high-pressure) hoses**

High-grade hoses with outstanding resistance to heat and pressure provide maximum durability with low maintenance, even in demanding conditions.

**Durable cooling module**

The HW210A is equipped with a new, stacked-type, easy-clean cooling module with a hydraulically driven reversible fan. As well as improving durability, it optimises fuel economy and noise reduction.



**Centralised greasing system**

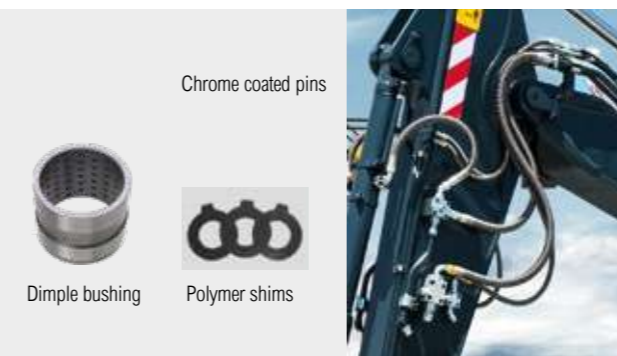
A centralised automatic greasing system can be installed as an option. This optimises daily maintenance to prolong the life of all machine joints.

OPTION



**Reinforced pins, bushings and polymer shims**

The reinforced pins, bushings and polymer shims are designed for an extended lifetime with less maintenance, reducing overall ownership costs.



Chrome coated pins



Dimple bushing



Polymer shims

**Reinforced upper and lower frame structure**

Built for unbeatable strength and sturdiness, the HW210A offers solid performance over a long lifetime. The upper and lower frame structures are reinforced for high workload, while the attachments have been rigorously tested for the roughest conditions.





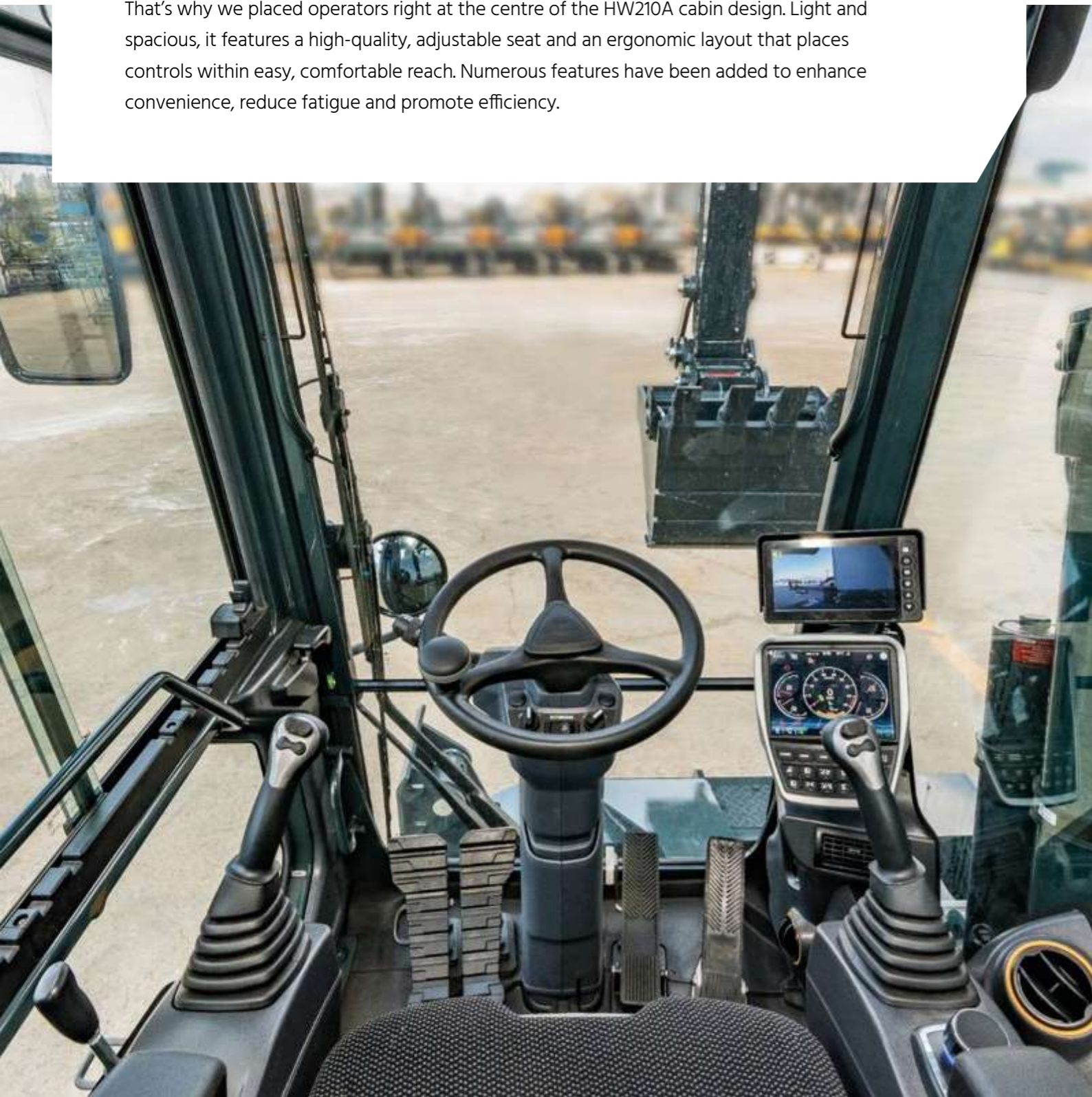
**Operator comfort**

# AIM FOR MORE COMFORT AND CONVENIENCE

**...with a spacious cabin and improved ergonomics.**

It's easier to be productive when your workplace is comfortable and well designed.

That's why we placed operators right at the centre of the HW210A cabin design. Light and spacious, it features a high-quality, adjustable seat and an ergonomic layout that places controls within easy, comfortable reach. Numerous features have been added to enhance convenience, reduce fatigue and promote efficiency.



**3-way adjustable steering column**

The steering column is ergonomically positioned and adjustable so that every operator can work more comfortably and productively.



**Work modes**

The operator can select from three different work modes – Park, Work and Travel – for convenient automatic control of a range of functions.



**Deluxe seat**

The air suspension seat is ergonomically designed and heated, helping operators to work longer without fatigue in all weathers and seasons.



**Full climate control**

The efficient air conditioning is enhanced with full climate control for fast heating, cooling and defrosting.

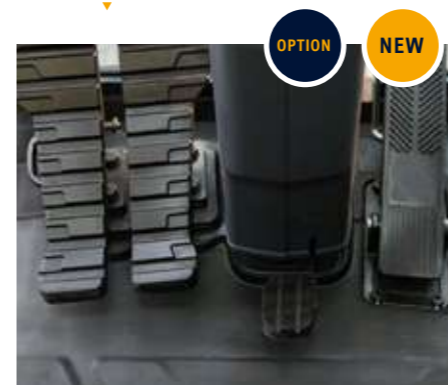


**Jog dial module**

For added convenience, an integrated jog dial module allows easy control of the air conditioning and instrument cluster navigation.

**Auxiliary joystick and pedal control**

A 2-way proportional auxiliary joystick and pedal control enable effortless operation to minimise operator fatigue.



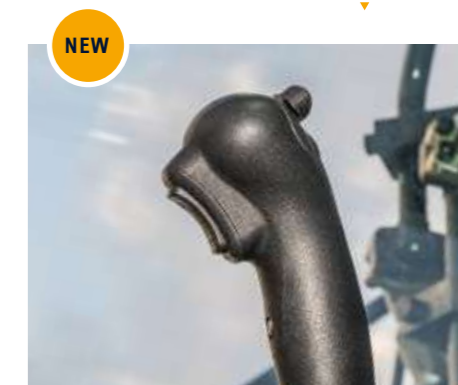
**Joystick steering**

The HW210A features right-hand joystick steering, for quick, easy manoeuvring and enhanced productivity.



**FNR and Ram Lock Switch on joystick**

The Forward/Reverse switch is positioned right at the operator's fingertip. The front axle oscillation lock can also be activated from the joystick, improving convenience and productivity on demanding jobs.





Operator comfort

# AIM FOR EASY, EFFICIENT CONTROL

.... with the right technologies to assist you.



**Wide touchscreen monitor**

The 8-inch touchscreen is one of the largest on the market and features WiFi connectivity, allowing operators to take advantage of smart technologies as they work.



**Advanced audio system**

The audio system includes a radio player, USB-based MP3 player and Bluetooth for hands-free calling. The smart display of the cabin monitor mirrors mobile phone functions, keeping operators entertained and connected all day long.



OPTION

**Attachment flow control**

Operators can choose the optimal flow rate setting via the cabin display to tailor attachment performance for a wide range of operations and environments. The machine memory accommodates 20 attachments (10 breaker types and 10 crusher types).



**Lifting mode and power boost function**

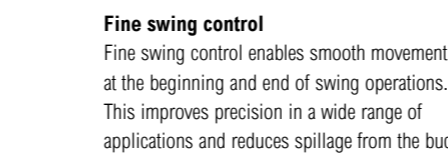
Lifting mode increases power and precision while reducing operating speed when lifting heavy loads. The power boost function automatically increases relief pressure for that extra push when you need it.



OPTION NEW

**Air compressor**

An optional air compressor can be mounted in the cabin to help operators keep their workspace pleasant and comfortable.

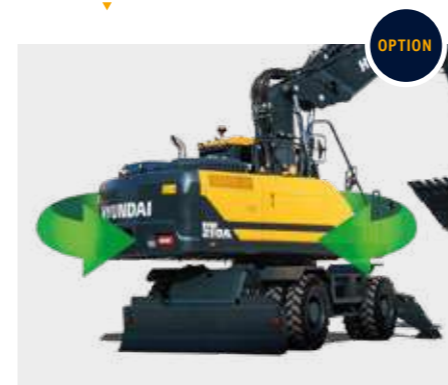


**Fine swing control**

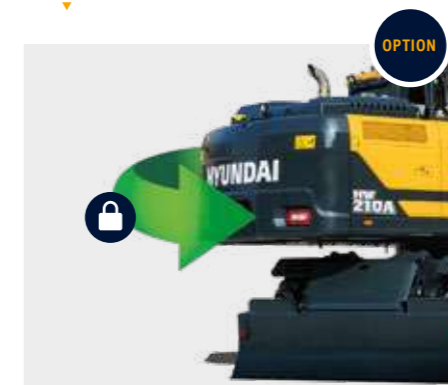
Fine swing control enables smooth movement at the beginning and end of swing operations. This improves precision in a wide range of applications and reduces spillage from the bucket.

**Swing lock system**

Swing lock disables the turret swing to increase safety when needed. This is particularly useful during road travel, when working next to roads and railways, or near buildings and other obstacles.



OPTION



OPTION

**Cruise control & speed limiter, creep speed drive**

The HW210A is equipped with cruise control and speed limiter systems, allowing operators to relax while maintaining a steady speed over longer distances. When creep speed is activated, the excavator will drive at a maximum speed of 3.5 km/hr. This gives the operator better control and higher torque with minimal effort.





## Safety

# AIM FOR THE HIGHEST PROTECTION FOR WORKERS

... with zero compromise on efficiency.

The Hyundai approach to safety goes far beyond just meeting regulatory standards. We prioritise safety in every aspect of our machines and work with our customers to keep improving protection for operators, co-workers, passers-by, surrounding buildings and of course the machines themselves. This includes robust, protective machine structures, a cabin design that offers a clear all-round view of machine surroundings and a series of additional features and technologies that increase peace of mind on and off the work site.



◀ **Safety valves on all cylinders**  
As a standard feature, safety valves are integrated on the boom, arm, blade and ram lock hydraulic cylinders.

◀ **LED lights**  
All the working lights are LED-type for greater visibility during work and travel.

NEW

◀ **Safety glass**  
Safety glass has been used for all windows, including a laminated glass front window for added protection

◀ **Cabin suspension mount**  
Integrated silencer blocks minimise noise and vibration inside the cabin, reducing fatigue and allowing safer, more enjoyable operation.

◀ **Improved cabin access**  
The cabin access steps have been redesigned for safe, convenient entry.

NEW



## Safety

### Advanced Around View Monitoring (AAVM)

Hyundai's AAVM camera system can be installed as an option, giving operators a 360° overview of their immediate working environment, including rear, side mirror and birds-eye views. It also integrates Intelligent Moving Object Detection (IMOD) technology that senses and warns the driver when people or objects come within five metres of the machine.

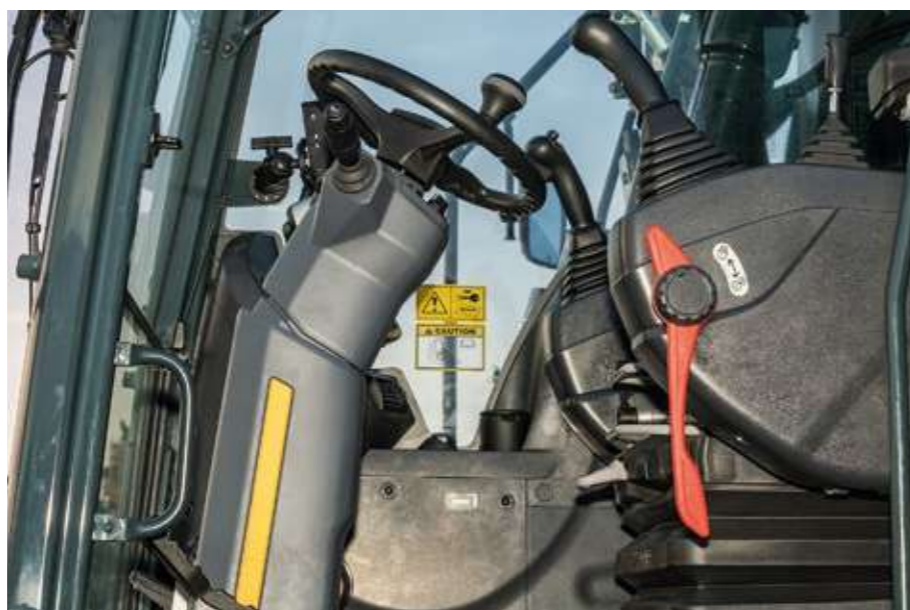


### Radar with second monitor

The radar system detects static or moving objects within a 10-metre radius of the rear of the excavator, day or night. Obstacles are displayed on a separate monitor giving operators maximum visibility.

### Auto safety lock

The auto safety lock feature prevents unintentional ignition and random machine movement. When the safety lever is unlocked, the engine cannot be started and the system will not engage, even if the joystick is pressed accidentally.



### Axles and fenders

The HW210A has been equipped with heavy duty rigid axles for higher durability and better stability in different conditions and material handling applications. Sturdy steel fenders have been added to protect the tyres from flying debris while driving.

### Emergency steering

If the hydraulic supply should fail, manual steering is automatically enabled.

### ROPS / FOPS certified cabin

To protect workers, the cabin structure is reinforced with integrally welded, low-stress, high-strength steel. It is certified to ISO 12117-2 (ROPS - Roll-over Protective Structures) and ISO 10262 Level 2 (FOPS - Falling Object Protective Structures) safety standards.

### Guard rail

A rigid or foldable guard rail can be fitted as an option to improve access to the upper structure and make moving around the machine safer and easier.

### New upper structure design

The upper structure has been redesigned to improve access for maintenance.





Serviceability & Connectivity

# AIM FOR MAXIMUM UPTIME AND EFFICIENT SERVICING

... with intelligent machine management and easy access.

Our A-Series wheeled excavators are designed with quick, low-effort servicing in mind. Every component and material has been optimised to ensure a long, trouble-free life. Hyundai's innovative Hi MATE telematics system enables full monitoring of machine activity and performance. Maximum connectivity is integrated to help owners create a smart construction site and protect profitability as their business grows.



OPTION

**Fuel filler pump**  
An integrated fuel filler pump with auto stop makes refuelling quick and easy.



**Mobile Fleet app**  
Hyundai's new Mobile Fleet app provides all the information you need to run your fleet efficiently and economically. Based on telematics, this advanced solution uses simple graphics and key performance data for smart fleet management.

**DEF/AdBlue filler access**  
Access to the DEF/AdBlue tank filling point has been made easier with redesigned steps.



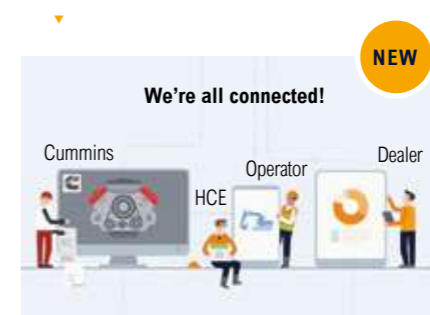
## HiMATE

### Boost efficiency and performance

For maximum convenience and security, the HW210A features Hyundai's exclusive Hi MATE remote fleet management system, which uses mobile data technology to provide the highest level of service and support. You can monitor your equipment wherever you are via a dedicated website or mobile app, with access to working parameters like total engine hours, machine utilisation, actual performed working hours, fuel consumption and machine location.



**ECD (Engine Connected Diagnostics)**  
ECD provides troubleshooting advice as well as tailored servicing and parts support from Cummins Quick Serve. Service technicians are supported with remote diagnostics reports allowing them to prepare for initial site visits, bring the right tools and achieve a higher problem resolution rate.



**Increase productivity**  
By providing information such as service hours, idle time and fuel consumption, Hi MATE saves you money and improves productivity. Service alerts enable better maintenance planning.



**Monitor your machines**  
Hi MATE's real-time location information allows better, more convenient monitoring of your equipment. Just log onto the Hi MATE website or mobile app to see your machines at any time, from any location. Receive data online, by e-mail or directly on your mobile device.



**Improve security**  
Protect your equipment from theft or unauthorised usage. Hi MATE's geofencing alerts notify you automatically when a machine leaves a predetermined zone.



Take the tour!

# HW210A

## Productivity & Efficiency

- High-performing Stage V engine with advanced exhaust aftertreatment **NEW**
- EPFC (Electronic Pump Flow Control) system **NEW**
- Variable Power Control **NEW**
- Hydrostatic 4-wheel drive
- Eco gauge
- Electronically controlled reversible fan **NEW**
- Tiltrotator **NEW** **OPTION**
- 2D and 3D grading **NEW** **OPTION**

## Comfort

- 3-way adjustable steering column **NEW**
- Largest touchscreen monitor on the market (incl. WiFi)
- Attachment flow control
- Joystick steering **OPTION**
- FNR and Ram Lock Switch on Joystick **NEW**
- Cruise control & speed limiter
- Advanced audio system
- Full climate control



## Safety

- Advanced Around View Monitoring (AAVM) camera system **OPTION**
- Radar with second monitor **NEW** **OPTION**
- LED working lights
- ROPS / FOPS certified cabin
- Safety glass
- Wide axle and fenders **OPTION**
- Auto safety lock **NEW**
- Safety valves on all cylinders
- Automatic digging brake **NEW** **OPTION**

## Serviceability & Connectivity

- ECD (Engine Connected Diagnostics) **NEW**
- Improved DEF/AdBlue filler access
- Fuel filler pump with auto stop **OPTION**
- Hyundai Hi MATE telematics system
- Mobile Fleet app **OPTION**

## Durability

- Reinforced upper and lower frame structure
- Reinforced pins, bushings and polymer shims
- Durable cooling module
- Hi-grade (high-pressure) hoses
- Centralised greasing system **OPTION**



## Genuine parts and warranties

# THE BEST WAY TO PROTECT YOUR INVESTMENT

Hyundai Genuine Parts, accessories and warranty programmes are specially designed to keep your machine covered. They increase uptime and maintain the performance, comfort, and convenience that are built into your equipment.

### Fuel filters

Hyundai fuel filters provide the right degree of filtration to keep your engine clean. They are designed to meet and exceed the engine manufacturer's prerequisites for water separation and dirt filtration, prolonging the life of your engine.

### Aftermarket kits

You can order Hyundai aftermarket kits via your dealer. This AAVM system for example, improves safety in and around your work environment at all times.

### Hyundai Genuine Parts

Hyundai Genuine Parts have the same design as those installed when your machine left the factory. They are subjected to rigorous quality inspections and tests to make sure they meet Hyundai's strict requirements for quality and durability. As well as minimising downtime, this helps to ensure peak performance on every task.



## Hyundai warranties

Our warranties are designed to give you the cover you need to build your business with confidence and peace of mind.

### Standard warranties

We offer standard warranty coverage for all wheeled excavators. In addition, optional and extended warranty periods are available, so you can benefit from full warranty coverage for longer, and even over the full lifetime of the machine. Please discuss the optimal solution for your needs with your local Hyundai dealer.

### Extended warranties

Our extended warranties help you maintain full control over your operating costs. If you combine an extended warranty programme with a tailored maintenance contract, you can completely avoid unexpected costs.



## A network you can rely on

Hyundai Construction Equipment Europe prioritises quick, reliable intervention to keep your equipment running reliably. In its 13000 m<sup>2</sup> warehouse, Hyundai covers over 96% of all Genuine Parts. With one of Europe's most advanced automated warehousing systems, we are able to maintain availability and efficient delivery of all our Genuine Parts. Moreover, we guarantee a 24-hour delivery service across our European dealer network.

# SPECIFICATIONS

| ENGINE        |  |
|---------------|--|
| Maker / Model | CUMMINS / B6.7   |
| Type          | 6 cylinder, turbocharged, charge air cooled, electronic controlled diesel engine |
| Gross Power   | 129 kW (173 hp) at 2200 rpm  |
| Net Power     | 127 kW (170 hp) at 2200 rpm  |
| Max. Power    | 145 kW (195 hp) at 2200 rpm  |
| Peak Torque   | 881 N·m at 1300 rpm  |
| Displacement  | 6700 cc  |

| HYDRAULIC SYSTEM                          |              |
|---|--------------|
| EPFC - Electronic Pump Flow Control       |              |
| Type                                      | Piston pumps |
| Max. flow                                 | 2 X 208 lpm  |
| Sub-pump for pilot circuit                | Gear pump    |
| Cross-sensing and fuel saving pump system |              |

| HYDRAULIC MOTORS |  |
|------------------|--|
| Travel           | Two speed axial pistons motor with brake valve and parking brake |
| Swing            | Axial piston motor with automatic brake                          |

| RELIEF VALVE SETTING            |                         |
|---------------------------------|-------------------------|
| Implement circuits              | 350 kgf/cm <sup>2</sup> |
| Travel                          | 380 kgf/cm <sup>2</sup> |
| Power boost (boom, arm, bucket) | 380 kgf/cm <sup>2</sup> |
| Swing circuit                   | 265 kgf/cm <sup>2</sup> |
| Pilot circuit                   | 40 kgf/cm <sup>2</sup>  |
| Service valve                   | Installed               |

| HYDRAULIC CYLINDERS           |                               |
|-------------------------------|-------------------------------|
| No. of cylinder bore × stroke | Boom: 2-120 × 1275 mm         |
|                               | Arm: 1-140 × 1510 mm          |
|                               | Bucket: 1-120 × 1055 mm       |
|                               | Dozer Blade: 2-125 × 252 mm   |
|                               | Outrigger: 2-130 × 436 mm     |
|                               | 2-PCS boom: 2-120 × 1080 mm   |
|                               | Adjust (boom): 1-170 × 720 mm |

\* Hyundai Bio Hydraulic Oil (HBHO) available.

| DRIVES & BRAKES   |            |           |
|---|------------|-----------|
| 4-wheel hydrostatic drive. Constant mesh, helical gear transmission provides 2 forward and reverse travel speeds. |            |           |
| Max. drawbar pull   | 12106 kgf  |           |
| Travel speed  | 1st        | 9.5 km/h  |
|   | 2nd        | 38.4 km/h |
| Gradeability  | 35° (70 %) |           |

Service Brake :

\* Independent dual brake, front and rear axle full hydraulic power brake.

\* Spring released and hydraulic applied wet type multiple disc brake.

Parking Brake :

\* Spring applied and hydraulic released wet disc brake type in transmission.

| CONTROLS           |  |
|--------------------|--|
| Pilot control      | Two joysticks with one safety lever                        |
|                    | (LH): Swing and arm,                                       |
|                    | (RH): Boom and bucket (ISO)                                |
| Attachment Control | FNR switch on RH joystick / Ram lock switch on LH joystick |
|                    | 3 modes available: Push / Proportional / Permanent         |
| Engine throttle    | Electric, Dial type  |
| Operation Mode     | 3 modes available: P-Parking W-Working T-Travel            |

| AXLE & WHEELS  |                                 |
|--|---------------------------------|
| Full floating front axle is supported by center pin for oscillation. Oscillation lock (ram lock) function for safe operation. Rear axle is fixed on the lower chassis. |                                 |
| Tyres  | 10.00-20-14PR, Dual (tube type) |
| (Optional)   | 10.00-20, Dual (solid type)     |
|  | 10.00-20-16PR, Dual (tube type) |

| STEERING SYSTEM  |         |
|--|---------|
| Hydraulically actuated, orbitrol type steering system actuates on front wheels through steering cylinders. |         |
| Min. turning radius  | 6690 mm |

| SWING SYSTEM              |  |
|---------------------------|--|
| Swing motor               | Fixed displacement axial pistons motor |
| Swing reduction           | Planetary gear reduction               |
| Swing bearing lubrication | Grease-bathed                          |
| Swing brake               | Multi wet disc                         |
| Swing speed               | 10.87 rpm                              |

| COOLANT & LUBRICANT CAPACITY      |       |       |
|-----------------------------------|-------|-------|
|                                   |       | liter |
| Fuel tank                         | 310.0 |       |
| Engine coolant                    | 40.0  |       |
| Engine oil                        | 24.4  |       |
| Swing device                      | 6.2   |       |
| Axle                              | Front | 14.6  |
|                                   | Rear  | 18.5  |
| Transmission                      | 2.5   |       |
| Hydraulic system (including tank) | 340.0 |       |
| Hydraulic tank                    | 165.0 |       |
| DEF/AdBlue®                       | 48.0  |       |

| UNDERCARRIAGE  |  |
|--|--|
| Reinforced box-section frame is all-welded, low-stress. Dozer blade and outriggers are available by pin-on design. |  |
| Dozer blade  | Parallelogram-mounted dozer blade to support machine when working, also for leveling and back filling. |
| Outrigger  | Indicated for max. operation stability when digging and lifting. Can be mounted on front/or rear.      |

| OPERATING WEIGHT (APPROXIMATE)  |           |              |
|---|-----------|--------------|
| Operating weight, including 5650 mm Mono boom or 5400 mm 2-Piece boom, 2920 mm arm, SAE heaped 0.80 m <sup>3</sup> bucket, lubricant, coolant, full fuel tank, hydraulic tank and standard equipment. |           |              |
| OPERATING WEIGHT  |           |              |
| Undercarriage   | Mono boom | 2-Piece boom |
| Front grab rest and rear dozer blade  | 21280 kg  | 22510 kg     |
| Front outriggers and rear blade   | 22360 kg  | 23690 kg     |
| Front blade and rear outriggers   | 22510 kg  | 23840 kg     |
| Front and rear outriggers   | 22480 kg  | 23810 kg     |
| Front and rear dozer blade  | 22390 kg  | 23720 kg     |

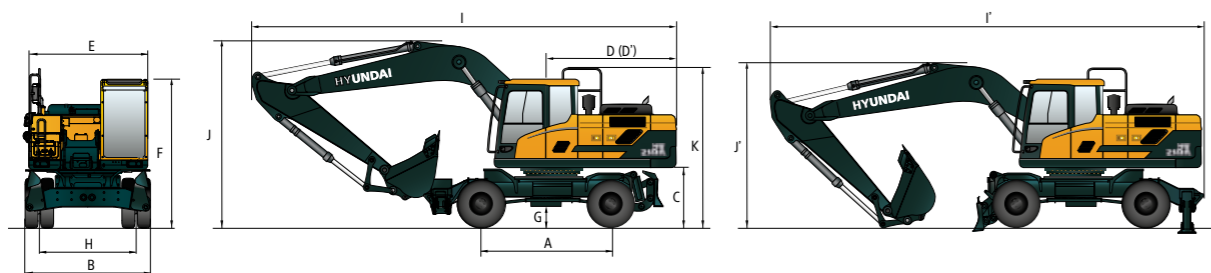
| AIR CONDITIONING SYSTEM   |  |
|---|--|
| The air conditioning system contains fluorinated greenhouse gas refrigerant R134a (Global Warming Potential = 1430). The system contains 0.8 kg of refrigerant representing a CO <sub>2</sub> equivalent of 1.14 metric tonnes. |  |



# DIMENSIONS & WORKING RANGE

## HW210A MONO BOOM DIMENSIONS

5.65 m Mono Boom, 2.4 m, 2.70 m, 2.92 m Arm, Front Outriggers and Rear Dozer Blade.



Unit : mm

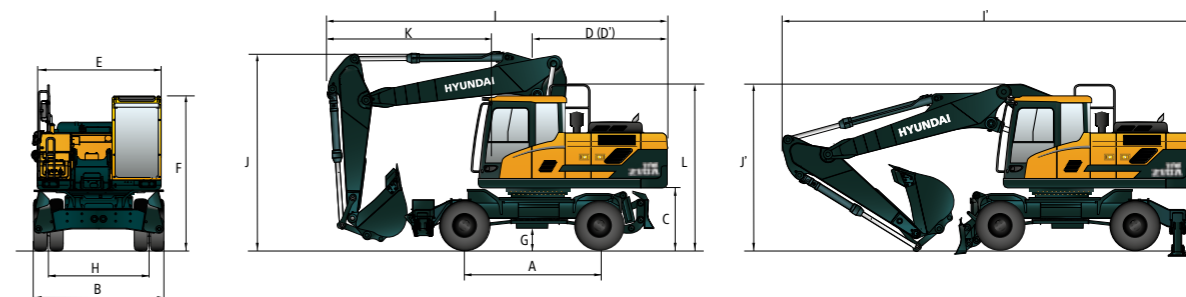
|    |                                   |             |
|----|-----------------------------------|-------------|
| A  | Wheel base                        | 2800        |
| B  | Overall width (STD / Wide axle)   | 2530 / 2700 |
| C  | Ground clearance of counterweight | 1295        |
| D  | Rear-end distance                 | 2733        |
| D' | Rear-end swing radius             | 2740        |
| E  | Upperstructure width              | 2530        |
| F  | Overall height of cab             | 3260        |
| G  | Min. ground clearance             | 353         |
| H  | Tread                             | 1914        |
| K  | Overall height of guardrail       | 3330        |

|             |   |      |      |      |
|-------------|---|------|------|------|
| Boom length |   | 5650 |      |      |
| Arm length  |   | 2400 | 2700 | 2920 |
| I           | Overall length (Traveling position)         | 9590 | 9540 | 9380 |
| I'          | Overall length (Shipping position)          | 9680 | 9570 | 9500 |
| J           | Overall height of boom (Traveling position) | 3720 | 3650 | 4020 |
| J'          | Overall height of boom (Shipping position)  | 3350 | 3240 | 3150 |

# DIMENSIONS & WORKING RANGE

## HW210A 2-PIECE BOOM DIMENSIONS

5.4 m 2-Piece Boom, 2.40 m, 2.70 m, 2.92 m Arm, Rear Dozer Blade

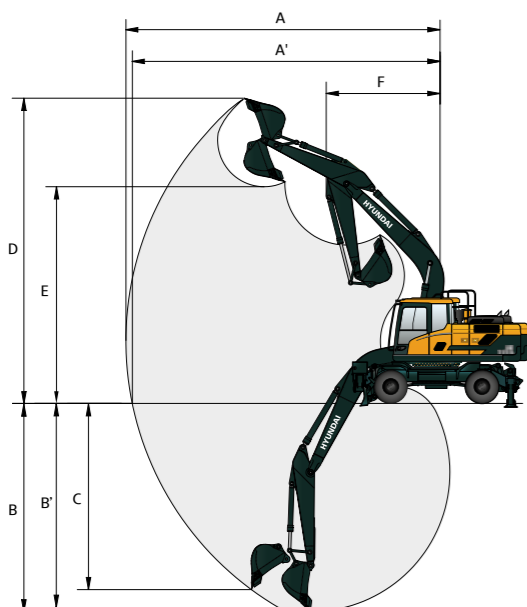


Unit : mm

|    |                                   |             |
|----|-----------------------------------|-------------|
| A  | Wheel base                        | 2800        |
| B  | Overall width (STD / Wide axle)   | 2530 / 2700 |
| C  | Ground clearance of counterweight | 1295        |
| D  | Rear-end distance                 | 2733        |
| D' | Rear-end swing radius             | 2740        |
| E  | Upperstructure width              | 2530        |
| F  | Overall height of cab             | 3260        |
| G  | Min. ground clearance             | 353         |
| H  | Tread                             | 1914        |
| L  | Overall height of guardrail       | 3330        |

|             |   |      |      |      |
|-------------|---|------|------|------|
| Boom length |   | 5400 |      |      |
| Arm length  |   | 2400 | 2700 | 2920 |
| I           | Overall length (Traveling position)         | 7090 | 7060 | 6980 |
| I'          | Overall length (Shipping position)          | 9240 | 9250 | 9230 |
| J           | Overall height of boom (Traveling position) | 3990 | 3990 | 3990 |
| J'          | Overall height of boom (Shipping position)  | 3170 | 3150 | 3180 |
| K           | End of attachment to steering wheel         | 3610 | 3580 | 3500 |

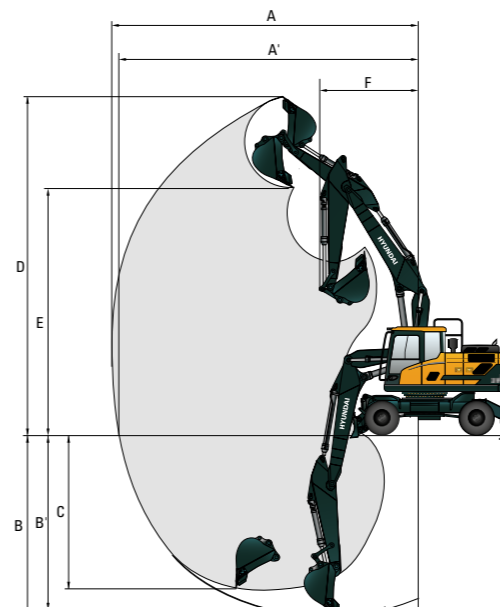
## HW210A MONO BOOM WORKING RANGE



Unit : mm

|             |                                  |      |      |       |
|-------------|----------------------------------|------|------|-------|
| Boom Length |                                  | 5650 |      |       |
| Arm Length  |                                  | 2400 | 2700 | 2920  |
| A           | Max. digging reach               | 9480 | 9760 | 9970  |
| A'          | Max. digging reach on ground     | 9270 | 9550 | 9770  |
| B           | Max. digging depth               | 5860 | 6210 | 6430  |
| B'          | Max. digging depth (8° level)    | 5660 | 5980 | 6210  |
| C           | Max. vertical wall digging depth | 5510 | 5830 | 6110  |
| D           | Max. digging height              | 9710 | 9870 | 10020 |
| E           | Max. dumping height              | 6860 | 7010 | 7160  |
| F           | Min. swing radius                | 3520 | 3490 | 3460  |

## HW210A 2-PIECE BOOM WORKING RANGE


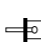


Unit : mm

|             |                                  |       |       |       |
|-------------|----------------------------------|-------|-------|-------|
| Boom Length |                                  | 5400  |       |       |
| Arm Length  |                                  | 2400  | 2700  | 2920  |
| A           | Max. digging reach               | 9310  | 9600  | 9810  |
| A'          | Max. digging reach on ground     | 9100  | 9400  | 9610  |
| B           | Max. digging depth               | 5570  | 5870  | 6090  |
| B'          | Max. digging depth (8° level)    | 5470  | 5770  | 6000  |
| C           | Max. vertical wall digging depth | 4630  | 4580  | 4730  |
| D           | Max. digging height              | 10300 | 10520 | 10690 |
| E           | Max. dumping height              | 7370  | 7590  | 7750  |
| F           | Min. swing radius                | 3030  | 2870  | 2860  |


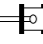

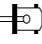

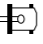






# LIFTING CAPACITY

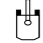
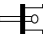

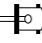

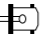

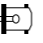

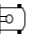
 Rating over-front  Rating over-side or 360 degrees

## HW210A MONO BOOM


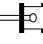

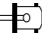

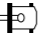

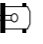


5.65 m Mono boom, 2.40 m arm equipped with outriggers and dozer blade up

| Lift-point height<br>m |    | Lift-point radius   |   |   |   |   |   |   |  | At max. Reach   |   |      |
|------------------------|----|---|---|---|---|---|---|---|--|---|---|------|
|                        |    | 3.0 m   |   | 4.5 m   |   | 6.0 m   |   | 7.5 m   |  | Capacity  | Reach   |      |
|                        |    |  |  |  |  |  |  |  |  |  |  | m    |
| 7.5 m                  | kg |   |   |   |   |   |   |   |  | *4820   | 4670  | 5.72 |
| 6.0 m                  | kg |   |   |   |   | *5520   | 4330  |   |  | *4400   | 3410  | 6.89 |
| 4.5 m                  | kg |   |   | *7190   | 6460  | *5960   | 4180  | 4330  | 2910   | 4240  | 2850  | 7.59 |
| 3.0 m                  | kg |   |   | *8800   | 5920  | 5980  | 3950  | 4250  | 2830   | 3870  | 2580  | 7.94 |
| 1.5 m                  | kg |   |   | 8890  | 5500  | 5750  | 3730  | 4140  | 2730   | 3760  | 2480  | 8.00 |
| 0.0 m                  | kg |   |   | 8680  | 5320  | 5600  | 3600  | 4070  | 2670   | 3890  | 2550  | 7.76 |
| -1.5 m                 | kg | *11990  | 10010   | 8660  | 5310  | 5570  | 3570  |   |  | 4320  | 2830  | 7.21 |
| -3.0 m                 | kg | *11220  | 10230   | *8410   | 5420  | 5680  | 3670  |   |  | 5380  | 3500  | 6.25 |

5.65 m Mono boom, 2.40 m arm equipped with outriggers and dozer blade down



| Lift-point height<br>m |    | Lift-point radius   |   |   |   |   |   |   |  | At max. Reach   |   |      |
|------------------------|----|---|---|---|---|---|---|---|--|---|---|------|
|                        |    | 3.0 m   |   | 4.5 m   |   | 6.0 m   |   | 7.5 m   |  | Capacity  | Reach   |      |
|                        |    |  |  |  |  |  |  |  |  |  |  | m    |
| 7.5 m                  | kg |   |   |   |   |   |   |   |  | *4820   | *4820   | 5.72 |
| 6.0 m                  | kg |   |   |   |   | *5520   | *5520   |   |  | *4400   | *4400   | 6.89 |
| 4.5 m                  | kg |   |   | *7190   | *7190   | *5960   | 5550  | *5130   | 3880   | *4300   | 3800  | 7.59 |
| 3.0 m                  | kg |   |   | *8800   | 8140  | *6640   | 5310  | *5630   | 3790   | *4390   | 3460  | 7.94 |
| 1.5 m                  | kg |   |   | *10000  | 7680  | *7260   | 5080  | *5870   | 3690   | *4680   | 3360  | 8.00 |
| 0.0 m                  | kg |   |   | *10280  | 7480  | *7540   | 4940  | *5900   | 3630   | *5240   | 3460  | 7.76 |
| -1.5 m                 | kg | *11990  | *11990  | *9780   | 7470  | *7290   | 4910  |   |  | *5710   | 3840  | 7.21 |
| -3.0 m                 | kg | *11220  | *11220  | *8410   | 7600  | *6070   | 5010  |   |  | *5610   | 4760  | 6.25 |

5.65 m Mono boom, 2.40 m arm equipped with 4 outriggers down

| Lift-point height<br>m |    | Lift-point radius   |   |   |   |   |   |   |  | At max. Reach   |   |      |
|------------------------|----|---|---|---|---|---|---|---|--|---|---|------|
|                        |    | 3.0 m   |   | 4.5 m   |   | 6.0 m   |   | 7.5 m   |  | Capacity  | Reach   |      |
|                        |    |  |  |  |  |  |  |  |  |  |  | m    |
| 7.5 m                  | kg |   |   |   |   |   |   |   |  | *4820   | *4820   | 5.72 |
| 6.0 m                  | kg |   |   |   |   | *5520   | *5520   |   |  | *4400   | *4400   | 6.89 |
| 4.5 m                  | kg |   |   | *7190   | *7190   | *5960   | *5960   | *5130   | 4570   | *4300   | *4300   | 7.59 |
| 3.0 m                  | kg |   |   | *8800   | *8800   | *6640   | 6310  | *5630   | 4490   | *4390   | 4100  | 7.94 |
| 1.5 m                  | kg |   |   | *10000  | 9380  | *7260   | 6070  | *5870   | 4380   | *4680   | 3980  | 8.00 |
| 0.0 m                  | kg |   |   | *10280  | 9170  | *7540   | 5920  | *5900   | 4320   | *5240   | 4120  | 7.76 |
| -1.5 m                 | kg | *11990  | *11990  | *9780   | 9160  | *7290   | 5890  |   |  | *5710   | 4570  | 7.21 |
| -3.0 m                 | kg | *11220  | *11220  | *8410   | *8410   | *6070   | 6000  |   |  | *5610   | *5610   | 6.25 |









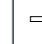

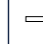

- Lifting capacities are based on ISO 10567.
- Lifting capacity of the HW A-series does not exceed 75% of tipping load with the machine on firm, level ground or 87% of full hydraulic capacity.
- The Lift-point is bucket pivot mounting pin on the arm (without bucket mass).
- (\*) indicates load limited by hydraulic capacity.
- Caution: please be aware of the local regulations and instructions for lifting operations.

# LIFTING CAPACITY









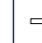

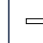

 Rating over-front  Rating over-side or 360 degrees

## HW210A MONO BOOM











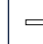

5.65 m Mono boom, 2.92 m arm equipped with outriggers and dozer blade up

| Lift-point height<br>m |    | Lift-point radius   |   |   |   |   |   |   |   |   |   | At max. Reach   |   |      |  |  |       |       |      |      |
|------------------------|----|---|---|---|---|---|---|---|---|---|---|---|---|------|--|--|-------|-------|------|------|
|                        |    | 1.5 m   |   | 3.0 m   |   | 4.5 m   |   | 6.0 m   |   | 7.5 m   |   | Capacity  | Reach   |      |  |  |       |       |      |      |
|                        |    |  |  |  |  |  |  |  |  |  |  |  |  | m    |  |  |       |       |      |      |
| 7.5 m                  | kg |   |   |   |   |   |   |   |   |   |   |   | *4680   | 4410 |  |  | *3140 | *3140 | 6.39 |      |
| 6.0 m                  | kg |   |   |   |   |   |   |   |   |   |   |   | *5020   | 4390 |  |  | *2900 | *2900 | 7.45 |      |
| 4.5 m                  | kg |   |   |   |   | *6500   | *6500   | *5520   | 4220  | 4370  | 2930  |   |   |      |  |  |       |       |      | 8.10 |
| 3.0 m                  | kg |   |   |   |   | *8160   | 6030  | 6020  | 3970  | 4250  | 2820  |   |   |      |  |  |       |       |      | 8.43 |
| 1.5 m                  | kg |   |   |   |   | 8960  | 5540  | 5750  | 3730  | 4120  | 2700  |   |   |      |  |  |       |       |      | 8.49 |
| 0.0 m                  | kg |   |   |   |   | *6650   | *6650   | 8650  | 5280  | 5570  | 3560  | 4030  | 2620  |      |  |  |       |       |      | 8.27 |
| -1.5 m                 | kg | *7190   | *7190   | *11250  | 9770  | 8570  | 5210  | 5500  | 3490  | 4000  | 2590  |   |   |      |  |  |       |       |      | 7.75 |
| -3.0 m                 | kg | *11870  | *11870  | *12450  | 9970  | 8660  | 5280  | 5550  | 3540  |   |   |   |   |      |  |  |       |       |      | 6.86 |
| -4.5 m                 | kg |   |   |   |   | *9040   | *9040   | *6580   | 5510  |   |   |   |   |      |  |  |       |       |      | 5.43 |

5.65 m Mono boom, 2.92m arm equipped with outriggers and dozer blade down

| Lift-point height<br>m |    | Lift-point radius   |   |   |   |   |   |   |   |   |   | At max. Reach   |   |       |  |  |       |       |      |      |
|------------------------|----|---|---|---|---|---|---|---|---|---|---|---|---|-------|--|--|-------|-------|------|------|
|                        |    | 1.5 m   |   | 3.0 m   |   | 4.5 m   |   | 6.0 m   |   | 7.5 m   |   | Capacity  | Reach   |       |  |  |       |       |      |      |
|                        |    |  |  |  |  |  |  |  |  |  |  |  |  | m     |  |  |       |       |      |      |
| 7.5 m                  | kg |   |   |   |   |   |   |   |   |   |   |   | *4680   | *4680 |  |  | *3140 | *3140 | 6.39 |      |
| 6.0 m                  | kg |   |   |   |   |   |   |   |   |   |   |   | *5020   | *5020 |  |  | *2900 | *2900 | 7.45 |      |
| 4.5 m                  | kg |   |   |   |   | *6500   | *6500   | *5520   | *5520   | *5030   | 3910  |   |   |       |  |  |       |       |      | 8.10 |
| 3.0 m                  | kg |   |   |   |   | *8160   | *8160   | *6270   | 5340  | *5340   | 3800  |   |   |       |  |  |       |       |      | 8.43 |
| 1.5 m                  | kg |   |   |   |   | *9580   | 7740  | *6990   | 5080  | *5680   | 3670  |   |   |       |  |  |       |       |      | 8.49 |
| 0.0 m                  | kg |   |   |   |   | *6650   | *6650   | *10180  | 7460  | *7420   | 4910  | *5850   | 3580  |       |  |  |       |       |      | 8.27 |
| -1.5 m                 | kg | *7190   | *7190   | *11250  | *11250  | *9980   | 7380  | *7370   | 4840  | *5620   | 3560  |   |   |       |  |  |       |       |      | 7.75 |
| -3.0 m                 | kg | *11870  | *11870  | *12450  | *12450  | *8950   | 7460  | *6600   | 4880  |   |   |   |   |       |  |  |       |       |      | 6.86 |
| -4.5 m                 | kg |   |   |   |   | *9040   | *9040   | *6580   | *6580   |   |   |   |   |       |  |  |       |       |      | 5.43 |

5.65 m Mono boom, 2.92 m arm equipped with 4 outriggers down

| Lift-point height<br>m |    | Lift-point radius   |   |   |   |   |   |   |   |   |   | At max. Reach   |   |       |  |  |       |       |      |      |
|------------------------|----|---|---|---|---|---|---|---|---|---|---|---|---|-------|--|--|-------|-------|------|------|
|                        |    | 1.5 m   |   | 3.0 m   |   | 4.5 m   |   | 6.0 m   |   | 7.5 m   |   | Capacity  | Reach   |       |  |  |       |       |      |      |
|                        |    |  |  |  |  |  |  |  |  |  |  |  |  | m     |  |  |       |       |      |      |
| 7.5 m                  | kg |   |   |   |   |   |   |   |   |   |   |   | *4680   | *4680 |  |  | *3140 | *3140 | 6.39 |      |
| 6.0 m                  | kg |   |   |   |   |   |   |   |   |   |   |   | *5020   | *5020 |  |  | *2900 | *2900 | 7.45 |      |
| 4.5 m                  | kg |   |   |   |   | *6500   | *6500   | *5520   | *5520   | *5030   | 4610  |   |   |       |  |  |       |       |      | 8.10 |
| 3.0 m                  | kg |   |   |   |   | *8160   | *8160   | *6270   | *6270   | *5340   | 4490  |   |   |       |  |  |       |       |      | 8.43 |
| 1.5 m                  | kg |   |   |   |   | *9580   | 9450  | *6990   | 6080  | *5680   | 4360  |   |   |       |  |  |       |       |      | 8.49 |
| 0.0 m                  | kg |   |   |   |   | *6650   | *6650   | *10180  | 9150  | *7420   | 5890  | *5850   | 4270  |       |  |  |       |       |      | 8.27 |
| -1.5 m                 | kg | *7190   | *7190   | *11250  | *11250  | *9980   | 9070  | *7370   | 5820  | *5620   | 4240  |   |   |       |  |  |       |       |      | 7.75 |
| -3.0 m                 | kg | *11870  | *11870  | *12450  | *12450  | *8950   | *8950   | *6600   | 5870  |   |   |   |   |       |  |  |       |       |      | 6.86 |
| -4.5 m                 | kg |   |   |   |   | *9040   | *9040   | *6580   | *6580   |   |   |   |   |       |  |  |       |       |      | 5.43 |

- Lifting capacities are based on ISO 10567.
- Lifting capacity of the HW A-series does not exceed 75% of tipping load with the machine on firm, level ground or 87% of full hydraulic capacity.
- The Lift-point is bucket pivot mounting pin on the arm (without bucket mass).
- (\*) indicates load limited by hydraulic capacity.
- Caution: please be aware of the local regulations and instructions for lifting operations.



# LIFTING CAPACITY

Rating over-front Rating over-side or 360 degrees

## HW210A 2-PIECE BOOM

5.4 m 2-Piece boom, 2.40 m arm equipped with outriggers and dozer blade up

| Lift-point height<br>m | kg | Lift-point radius |       |       |       |       |      |       |      | At max. Reach |       |      |
|------------------------|----|-------------------|-------|-------|-------|-------|------|-------|------|---------------|-------|------|
|                        |    | 3.0 m             |       | 4.5 m |       | 6.0 m |      | 7.5 m |      | Capacity      | Reach |      |
|                        |    |                   |       |       |       |       |      |       |      | kg            | m     |      |
| 7.5 m                  | kg |                   |       | *4680 | *4680 |       |      |       |      | *5110         | *5110 | 5.48 |
| 6.0 m                  | kg |                   |       | *4810 | *4810 | *4800 | 4750 |       |      | *4720         | 3930  | 6.69 |
| 4.5 m                  | kg | *7890             | *7890 | *5910 | *5910 | *5170 | 4620 |       |      | *4510         | 3290  | 7.41 |
| 3.0 m                  | kg |                   |       | *7600 | 6620  | *5920 | 4410 | 4680  | 3170 | 4420          | 2990  | 7.77 |
| 1.5 m                  | kg |                   |       | *9200 | 6210  | 6370  | 4210 | 4590  | 3080 | 4310          | 2900  | 7.83 |
| 0.0 m                  | kg |                   |       | 9640  | 6010  | 6220  | 4080 | 4540  | 3040 | 4470          | 2990  | 7.59 |
| -1.5 m                 | kg | *12480            | 11210 | 9620  | 6000  | 6200  | 4060 |       |      | 5000          | 3340  | 7.02 |

5.4 m 2-Piece boom, 2.40 m arm equipped with outriggers and dozer blade down

| Lift-point height<br>m | kg | Lift-point radius |        |        |       |       |       |       |      | At max. Reach |       |      |
|------------------------|----|-------------------|--------|--------|-------|-------|-------|-------|------|---------------|-------|------|
|                        |    | 3.0 m             |        | 4.5 m  |       | 6.0 m |       | 7.5 m |      | Capacity      | Reach |      |
|                        |    |                   |        |        |       |       |       |       |      | kg            | m     |      |
| 7.5 m                  | kg |                   |        | *4680  | *4680 |       |       |       |      | *5110         | *5110 | 5.48 |
| 6.0 m                  | kg |                   |        | *4810  | *4810 | *4800 | *4800 |       |      | *4720         | *4720 | 6.69 |
| 4.5 m                  | kg | *7890             | *7890  | *5910  | *5910 | *5170 | *5170 |       |      | *4510         | 4330  | 7.41 |
| 3.0 m                  | kg |                   |        | *7600  | *7600 | *5920 | 5850  | *5290 | 4190 | *4520         | 3960  | 7.77 |
| 1.5 m                  | kg |                   |        | *9200  | 8540  | *6740 | 5640  | *5660 | 4100 | *4740         | 3860  | 7.83 |
| 0.0 m                  | kg |                   |        | *10120 | 8330  | *7360 | 5500  | *5950 | 4050 | *5210         | 3990  | 7.59 |
| -1.5 m                 | kg | *12480            | *12480 | *10310 | 8310  | *7570 | 5480  |       |      | *6130         | 4460  | 7.02 |

5.4 m 2-Piece boom, 2.40 m arm equipped with 4 outriggers down

| Lift-point height<br>m | kg | Lift-point radius |        |        |        |       |       |       |      | At max. Reach |       |      |
|------------------------|----|-------------------|--------|--------|--------|-------|-------|-------|------|---------------|-------|------|
|                        |    | 3.0 m             |        | 4.5 m  |        | 6.0 m |       | 7.5 m |      | Capacity      | Reach |      |
|                        |    |                   |        |        |        |       |       |       |      | kg            | m     |      |
| 7.5 m                  | kg |                   |        | *4680  | *4680  |       |       |       |      | *5110         | *5110 | 5.48 |
| 6.0 m                  | kg |                   |        | *4810  | *4810  | *4800 | *4800 |       |      | *4720         | *4720 | 6.69 |
| 4.5 m                  | kg | *7890             | *7890  | *5910  | *5910  | *5170 | *5170 |       |      | *4510         | *4510 | 7.41 |
| 3.0 m                  | kg |                   |        | *7600  | *7600  | *5920 | *5920 | *5290 | 4920 | *4520         | *4520 | 7.77 |
| 1.5 m                  | kg |                   |        | *9200  | *9200  | *6740 | 6690  | *5660 | 4830 | *4740         | 4540  | 7.83 |
| 0.0 m                  | kg |                   |        | *10120 | *10120 | *7360 | 6550  | *5950 | 4780 | *5210         | 4710  | 7.59 |
| -1.5 m                 | kg | *12480            | *12480 | *10310 | 10120  | *7570 | 6520  |       |      | *6130         | 5270  | 7.02 |

- Lifting capacities are based on ISO 10567.
- Lifting capacity of the HW A-series does not exceed 75% of tipping load with the machine on firm, level ground or 87% of full hydraulic capacity.
- The Lift-point is bucket pivot mounting pin on the arm (without bucket mass).
- (\*) indicates load limited by hydraulic capacity.
- Caution: please be aware of the local regulations and instructions for lifting operations.

# LIFTING CAPACITY

Rating over-front Rating over-side or 360 degrees

## HW210A 2-PIECE BOOM

5.4 m 2-Piece boom, 2.92 m arm equipped with outriggers and dozer blade up

| Lift-point height<br>m | kg | Lift-point radius |       |       |       |       |       |       |      | At max. Reach |       |      |
|------------------------|----|-------------------|-------|-------|-------|-------|-------|-------|------|---------------|-------|------|
|                        |    | 3.0 m             |       | 4.5 m |       | 6.0 m |       | 7.5 m |      | Capacity      | Reach |      |
|                        |    |                   |       |       |       |       |       |       |      | kg            | m     |      |
| 9.0 m                  | kg |                   |       |       |       |       |       |       |      | *4500         | *4500 | 4.31 |
| 7.5 m                  | kg |                   |       |       |       | *4450 | *4450 |       |      | *3510         | *3510 | 6.17 |
| 6.0 m                  | kg |                   |       |       |       | *4230 | *4230 |       |      | *3160         | *3160 | 7.27 |
| 4.5 m                  | kg |                   |       | *5190 | *5190 | *4680 | 4670  | *4560 | 3260 | *3030         | 2940  | 7.93 |
| 3.0 m                  | kg |                   |       | *6890 | 6740  | *5480 | 4440  | 4690  | 3170 | *3040         | 2700  | 8.27 |
| 1.5 m                  | kg |                   |       | *8620 | 6260  | *6370 | 4210  | 4570  | 3060 | *3180         | 2620  | 8.33 |
| 0.0 m                  | kg | *6800             | *6800 | 9620  | 5990  | 6190  | 4040  | 4490  | 2980 | *3470         | 2690  | 8.10 |
| -1.5 m                 | kg | *11610            | 11010 | 9530  | 5910  | 6120  | 3980  | 4490  | 2980 | *4010         | 2950  | 7.57 |
| -3.0 m                 | kg |                   |       | 9620  | 5990  | 6190  | 4040  |       |      |               |       |      |

5.4 m 2-Piece boom, 2.92 m arm equipped with outriggers and dozer blade down

| Lift-point height<br>m | kg | Lift-point radius |        |        |       |       |       |       |      | At max. Reach |       |      |
|------------------------|----|-------------------|--------|--------|-------|-------|-------|-------|------|---------------|-------|------|
|                        |    | 3.0 m             |        | 4.5 m  |       | 6.0 m |       | 7.5 m |      | Capacity      | Reach |      |
|                        |    |                   |        |        |       |       |       |       |      | kg            | m     |      |
| 9.0 m                  | kg |                   |        |        |       |       |       |       |      | *4500         | *4500 | 4.31 |
| 7.5 m                  | kg |                   |        |        |       | *4450 | *4450 |       |      | *3510         | *3510 | 6.17 |
| 6.0 m                  | kg |                   |        |        |       | *4230 | *4230 |       |      | *3160         | *3160 | 7.27 |
| 4.5 m                  | kg |                   |        | *5190  | *5190 | *4680 | *4680 | *4560 | 4290 | *3030         | *3030 | 7.93 |
| 3.0 m                  | kg |                   |        | *6890  | *6890 | *5480 | *5480 | *4890 | 4190 | *3040         | *3040 | 8.27 |
| 1.5 m                  | kg |                   |        | *8620  | 8600  | *6370 | 5640  | *5350 | 4080 | *3180         | *3180 | 8.33 |
| 0.0 m                  | kg | *6800             | *6800  | *9780  | 8300  | *7100 | 5470  | *5750 | 4000 | *3470         | *3470 | 8.10 |
| -1.5 m                 | kg | *11610            | *11610 | *10240 | 8220  | *7480 | 5400  | *5030 | 4000 | *4010         | 3950  | 7.57 |
| -3.0 m                 | kg |                   |        | *9920  | 8310  | *7230 | 5470  |       |      |               |       |      |

5.4 m 2-Piece boom, 2.92 m arm equipped with 4 outriggers down

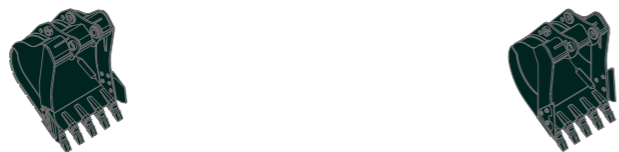
| Lift-point height<br>m | kg | Lift-point radius |        |        |       |       |       |       |       | At max. Reach |       |      |
|------------------------|----|-------------------|--------|--------|-------|-------|-------|-------|-------|---------------|-------|------|
|                        |    | 3.0 m             |        | 4.5 m  |       | 6.0 m |       | 7.5 m |       | Capacity      | Reach |      |
|                        |    |                   |        |        |       |       |       |       |       | kg            | m     |      |
| 9.0 m                  | kg |                   |        |        |       |       |       |       |       | *4500         | *4500 | 4.31 |
| 7.5 m                  | kg |                   |        |        |       | *4450 | *4450 |       |       | *3510         | *3510 | 6.17 |
| 6.0 m                  | kg |                   |        |        |       | *4230 | *4230 |       |       | *3160         | *3160 | 7.27 |
| 4.5 m                  | kg |                   |        | *5190  | *5190 | *4680 | *4680 | *4560 | *4560 | *3030         | *3030 | 7.93 |
| 3.0 m                  | kg |                   |        | *6890  | *6890 | *5480 | *5480 | *4890 | *4890 | *3040         | *3040 | 8.27 |
| 1.5 m                  | kg |                   |        | *8620  | *8620 | *6370 | *6370 | *5350 | 4810  | *3180         | *3180 | 8.33 |
| 0.0 m                  | kg | *6800             | *6800  | *9780  | *9780 | *7100 | 6520  | *5750 | 4730  | *3470         | *3470 | 8.10 |
| -1.5 m                 | kg | *11610            | *11610 | *10240 | 10030 | *7480 | 6450  | *5030 | 4730  | *4010         | *4010 | 7.57 |
| -3.0 m                 | kg |                   |        | *9920  | *9920 | *7230 | 6520  |       |       |               |       |      |

- Lifting capacities are based on ISO 10567.
- Lifting capacity of the HW A-series does not exceed 75% of tipping load with the machine on firm, level ground or 87% of full hydraulic capacity.
- The Lift-point is bucket pivot mounting pin on the arm (without bucket mass).
- (\*) indicates load limited by hydraulic capacity.
- Caution: please be aware of the local regulations and instructions for lifting operations.



# BUCKET SELECTION GUIDE & DIGGING FORCE

## BUCKETS



|                           |      |        |
|---------------------------|------|--------|
| SAE heaped m <sup>3</sup> | 0.80 | ■ 0.85 |
|                           | 0.86 | ■ 1.00 |
|                           | 0.92 | ■ 1.15 |
|                           | 1.20 |        |
|                           | 1.34 |        |

| Capacity m <sup>3</sup> |             | Width mm | Weight kg | Tooth EA | Recommendation mm |          |          |                   |          |          |
|-------------------------|-------------|----------|-----------|----------|-------------------|----------|----------|-------------------|----------|----------|
| SAE heaped              | CECE heaped |          |           |          | 5650 Mono Boom    |          |          | 5400 2-Piece Boom |          |          |
|                         |             |          |           |          | 2400 Arm          | 2700 Arm | 2920 Arm | 2400 Arm          | 2700 Arm | 2920 Arm |
| 0.80                    | 0.70        | 1070     | 770       | 5        | ○                 | ○        | ■        | ●                 | ●        | ●        |
| 0.86                    | 0.75        | 1140     | 740       | 5        | ○                 | ■        | ■        | ●                 | ●        | ○        |
| 0.92                    | 0.80        | 1190     | 820       | 5        | ■                 | ■        | ▲        | ●                 | ●        | ○        |
| 1.20                    | 1.05        | 1390     | 920       | 5        | ▲                 | X        | X        | ■                 | ■        | ▲        |
| 1.34                    | 1.17        | 1525     | 990       | 6        | X                 | X        | X        | ▲                 | ▲        | ▲        |
| ■ 0.85                  | 0.76        | 960      | 860       | 4        | ○                 | ■        | ■        | ●                 | ●        | ●        |
| ■ 1.00                  | 0.89        | 1110     | 950       | 5        | ■                 | ▲        | ▲        | ○                 | ○        | ■        |
| ■ 1.15                  | 1.01        | 1260     | 1030      | 6        | ▲                 | X        | X        | ■                 | ■        | ▲        |

- Heavy Duty
- Applicable for materials with density of 2100 kg/m<sup>3</sup> or less
- Applicable for materials with density of 1800 kg/m<sup>3</sup> or less
- Applicable for materials with density of 1500 kg/m<sup>3</sup> or less
- ▲ Applicable for materials with density of 1200 kg/m<sup>3</sup> or less
- X Not Recommended

## ATTACHMENT

Booms and arms are welded with a low-stress, full-box section design. 5.65 m Mono boom, 5.40 m 2-Piece boom and 2.4 m, 2.7 m, 2.92 m arms are available.

## DIGGING FORCE

| Boom                 | Length | mm  | 5650 Mono boom   |                  |                  | 5400 2-Piece boom |                  |                  | Remark            |
|----------------------|--------|-----|------------------|------------------|------------------|-------------------|------------------|------------------|-------------------|
|                      |        |     | 2400             | 2700             | 2920             | 2400              | 2700             | 2920             |                   |
| Bucket digging force | SAE    | kN  | 130.4<br>[141.6] | 130.4<br>[141.6] | 130.4<br>[141.6] | 130.4<br>[141.6]  | 130.4<br>[141.6] | 130.4<br>[141.6] | [ ] : Power Boost |
|                      |        | kgf | 13300<br>[14440] | 13300<br>[14440] | 13300<br>[14440] | 13300<br>[14440]  | 13300<br>[14440] | 13300<br>[14440] |                   |
|                      | ISO    | kN  | 151.0<br>[164.0] | 151.0<br>[164.0] | 151.0<br>[164.0] | 151.0<br>[164.0]  | 151.0<br>[164.0] | 151.0<br>[164.0] |                   |
|                      |        | kgf | 15400<br>[16720] | 15400<br>[16720] | 15400<br>[16720] | 15400<br>[16720]  | 15400<br>[16720] | 15400<br>[16720] |                   |
| Arm crowd force      | SAE    | kN  | 120.6<br>[130.9] | 108.9<br>[118.2] | 102.0<br>[110.7] | 120.6<br>[130.9]  | 108.9<br>[118.2] | 102.0<br>[110.7] | [ ] : Power Boost |
|                      |        | kgf | 12300<br>[13350] | 11100<br>[12050] | 10400<br>[11290] | 12300<br>[13350]  | 11100<br>[12050] | 10400<br>[11290] |                   |
|                      | ISO    | kN  | 126.5<br>[137.4] | 113.8<br>[123.5] | 106.9<br>[116.1] | 126.5<br>[137.4]  | 113.8<br>[123.5] | 106.9<br>[116.1] |                   |
|                      |        | kgf | 12900<br>[14010] | 11600<br>[12590] | 10900<br>[11830] | 12900<br>[14010]  | 11600<br>[12590] | 10900<br>[11830] |                   |

Note : Boom weight includes arm cylinder, piping, and pin  
 Arm weight includes bucket cylinder, linkage, and pin

# STANDARD/OPTIONAL EQUIPMENT

| ENGINE   | STD                            |
|--|--------------------------------|
| Cummins B6.7 engine                                      | ●                              |
| HYDRAULIC SYSTEM   | STD                            |
| <b>EPFC (Electronic Pump Flow Control)</b>               |                                |
| Variable Power Control                                   | ●                              |
| 3-power modes, 3-work modes, user mode                   | ●                              |
| Attachment Flow Control                                  | ●                              |
| 3 attachment control modes (Push/Prop./Permanent)        | ●                              |
| Engine Auto Idling                                       | ●                              |
| Engine Auto Shutdown                                     | ●                              |
| Electronic Fan Control (reversible)                      | ●                              |
| 35 km/h or 20 km/h travel motor                          | ●                              |
| Hyundai Bio Hydraulic Oil (HBHO)                         | ●                              |
| CABIN & INTERIOR   | STD                            |
| <b>ISO Standard cabin</b>                                |                                |
| All-weather steel cabin with 360° visibility             | ●                              |
| Parallel type windshield wiper                           | ●                              |
| Radio / USB / MP3 player                                 | ●                              |
| Handsfree mobile phone system with USB                   | ●                              |
| 12 volt power outlet (24V DC to 12V DC converter)        | ●                              |
| Electric horn  | ●                              |
| Safety glass - Tempered glass                            | ●                              |
| Safety glass - Tempered glass with front laminated glass | ●                              |
| Safety glass windows                                     | ●                              |
| Sliding fold-in front window                             | ●                              |
| Sliding side window (LH)                                 | ●                              |
| Lockable door  | ●                              |
| Hot & cool box   | ●                              |
| Storage compartment                                      | ●                              |
| Transparent cabin roof-cover                             | ●                              |
| Cabin light  | ●                              |
| Cabin front window rain guard                            | ●                              |
| Sun visor  | ●                              |
| Door and cab locks, one key                              | ●                              |
| Smart key & Start button                                 | ●                              |
| Pilot-operated proportional joysticks                    | ●                              |
| Steering wheel with 3-way adjustable steering column     | ●                              |
| Console box height adjust system                         | ●                              |
| <b>Automatic climate control</b>                         |                                |
| Air conditioner & heater                                 | ●                              |
| Defroster  | ●                              |
| Starting Aid (air grid heater) for cold weather          | ●                              |
| <b>Centralised monitoring</b>                            |                                |
| 8" LCD touchscreen display                               | ●                              |
| Engine speed or trip meter/Accel.                        | ●                              |
| Engine coolant temperature gauge                         | ●                              |
| Max power  | ●                              |
| Low speed/High speed                                     | ●                              |
| Auto idle  | ●                              |
| Overload warning with alarm                              | ●                              |
| Check Engine   | ●                              |
| Air cleaner clogging                                     | ●                              |
| Indicators   | ●                              |
| ECO Gauges   | ●                              |
| Fuel level gauge   | ●                              |
| Hyd. oil temperature gauge                               | ●                              |
| Fuel warmer  | ●                              |
| Warnings   | ●                              |
| Communication error                                      | ●                              |
| Low battery  | ●                              |
| Clock  | ●                              |
| <b>Seat</b>  |                                |
| Adjustable air suspension seat with heater               | ●                              |
| Mechanical suspension seat with heater                   | ●                              |
| <b>Cabin ROPS (ISO 12117-2)</b>                          |                                |
| ROPS (Roll Over Protective Structure)                    | ●                              |
| <b>Cabin FOPS/FOG (ISO 10262) Level 2</b>                |                                |
| FOPS (Falling Object Protective Structure)               | ●                              |
| FOG (Falling Object Guard)                               | Front & Top Guard<br>Top Guard |

| SAFETY  | STD |
|---|-----|
| Safety lock valve on boom cylinders with overload warning device      | ●   |
| Safety lock valve on arm cylinder                                     | ●   |
| Safety lock valve on dozer blade and ram lock cylinders               | ●   |
| Four outside rearview mirrors   | ●   |
| Rearview camera   | ●   |
| Rear & Mirrorview camera  | ●   |
| Rear Radar & 2nd monitor  | ●   |
| AAVM (Advanced Around View Monitoring)                                | ●   |
| Four front working lights LED (2 boom mounted, 2 front frame mounted) | ●   |
| Rear work lamp LED  | ●   |
| Beacon lamp LED   | ●   |
| Travel alarm  | ●   |
| Automatic swing brake   | ●   |
| Swing Lock System   | ●   |
| Auto-digging brake  | ●   |
| Joystick Steering   | ●   |
| Battery master switch   | ●   |
| Boom holding system   | ●   |
| Arm holding system  | ●   |
| General type guardrail  | ●   |
| Separable type guardrail  | ●   |

| ATTACHMENT          | STD |
|---------------------|-----|
| <b>Boom options</b> |     |
| 5.65 m Mono         | ●   |
| 5.40 m 2-Piece      | ●   |
| <b>Arm options</b>  |     |
| 2.4 m               | ●   |
| 2.92 m              | ●   |

| OTHER                                      | STD                 |
|--|---------------------|
| Heavy counterweight                        | ●                   |
| Removable clean-out dust net for cooler    | ●                   |
| Fuel pre-filter                            | ●                   |
| Fuel Warmer (Single)                       | ●                   |
| Self-diagnostics system                    | ●                   |
| Hi-MATE (Remote Management System)         | Mobile<br>Satellite |
| Batteries (2 x 12V x 100 AH)               | ●                   |
| Fuel filler pump (50 lpm) with autostop    | ●                   |
| Compressor with air-pistol in cabin        | ●                   |
| Single-acting piping kit (breaker, etc.)   | ●                   |
| Double-acting piping kit (clamshell, etc.) | ●                   |
| Rotating Piping Kit                        | ●                   |
| Quick coupler piping                       | ●                   |
| Quick coupler                              | ●                   |
| Bucket-Clamshell adaptation (3-way valve)  | ●                   |
| Accumulator for lowering work equipment    | ●                   |
| Pattern change valve (2 patterns)          | ●                   |
| Automatic digging brake                    | ●                   |
| Joystick steering                          | ●                   |
| Fine Swing Control System                  | ●                   |
| Tool kit                                   | ●                   |
| Cruise control                             | ●                   |
| Speed Limiter                              | ●                   |
| Creep speed travel mode                    | ●                   |

| UNDERCARRIAGE                        | STD |
|--------------------------------------|-----|
| Front outrigger and rear blade       | ●   |
| Front and rear outrigger             | ●   |
| Front blade and rear outrigger       | ●   |
| Front grab rest and rear dozer blade | ●   |
| Tires-dual (10.00-20-14PR tube)      | ●   |
| Tires-dual (10.00-20-16PR tube)      | ●   |
| Tires-dual (10.00-20 solid)          | ●   |
| Steel fenders (mudguards)            | ●   |
| Wide axle 2.7 m                      | ●   |

\* Standard and optional equipment may vary. Contact your Hyundai dealer for more information.  
 \* The machine may vary according to International standards.  
 \* The photos may include attachments and optional equipment that are not available in your area.  
 \* Materials and specifications are subject to change without advance notice.





Specifications and design are subject to change without notice. Pictures of Hyundai Construction Equipment Europe products may show other than standard equipment.

Hyundai Construction Equipment Europe nv,  
Hyundailaan 4, 3980 Tessenderlo, Belgium.  
Tel: (32) 14-56-2200 Fax: (32) 14-59-3405

EN-2021\_06 Rev 0

**Ready to aim high?**

**Contact your Hyundai dealer.**  
[hyundai-ce.eu/en/dealer-locator](https://hyundai-ce.eu/en/dealer-locator)